

**E-mail Accounts** [?] [X]

**Server Type**  
You can choose the type of server your new e-mail account will work with.

- Microsoft Exchange Server**  
Connect to an Exchange server to read e-mail, access public folders, and share documents.
- POP3**  
Connect to a POP3 e-mail server to download your e-mail.
- IMAP**  
Connect to an IMAP e-mail server to download e-mail and synchronize mailbox folders.
- HTTP**  
Connect to an HTTP e-mail server such as Hotmail to download e-mail and synchronize mailbox folders.
- Additional Server Types**  
Connect to another workgroup or 3rd-party mail server.

< Back    Next >    Cancel

**E-mail Accounts** [?] [X]

**Internet E-mail Settings (POP3)**  
Each of these settings are required to get your e-mail account working.

<b>User Information</b>	<b>Server Information</b>
Your Name: <input type="text" value="Your Name"/>	Incoming mail server (POP3): <input type="text" value="mail.true802.com"/>
E-mail Address: <input type="text" value="youremail@true802.com"/>	Outgoing mail server (SMTP): <input type="text" value="mail.true802.com"/>

<b>Logon Information</b>	<b>Test Settings</b>
User Name: <input type="text" value="youremail@true802.com"/>	After filling out the information on this screen, we recommend you test your account by clicking the button below. (Requires network connection)
Password: <input type="password" value="*****"/>	
<input checked="" type="checkbox"/> Remember password	<input type="button" value="Test Account Settings ..."/>
<input type="checkbox"/> Log on using Secure Password Authentication (SPA)	<input type="button" value="More Settings ..."/>

< Back    Next >    Cancel

Once finished entering all the necessary information on this screen, hit the More Settings Button to advance to the next screen shot.

Internet E-mail Settings

General | Outgoing Server | Connection | Advanced

Mail Account \_\_\_\_\_  
Type the name by which you would like to refer to this account. For example: "Work" or "Microsoft Mail Server"

YourEmail@true802.com

Other User Information \_\_\_\_\_

Organization: \_\_\_\_\_

Reply E-mail: youremail@true802.com

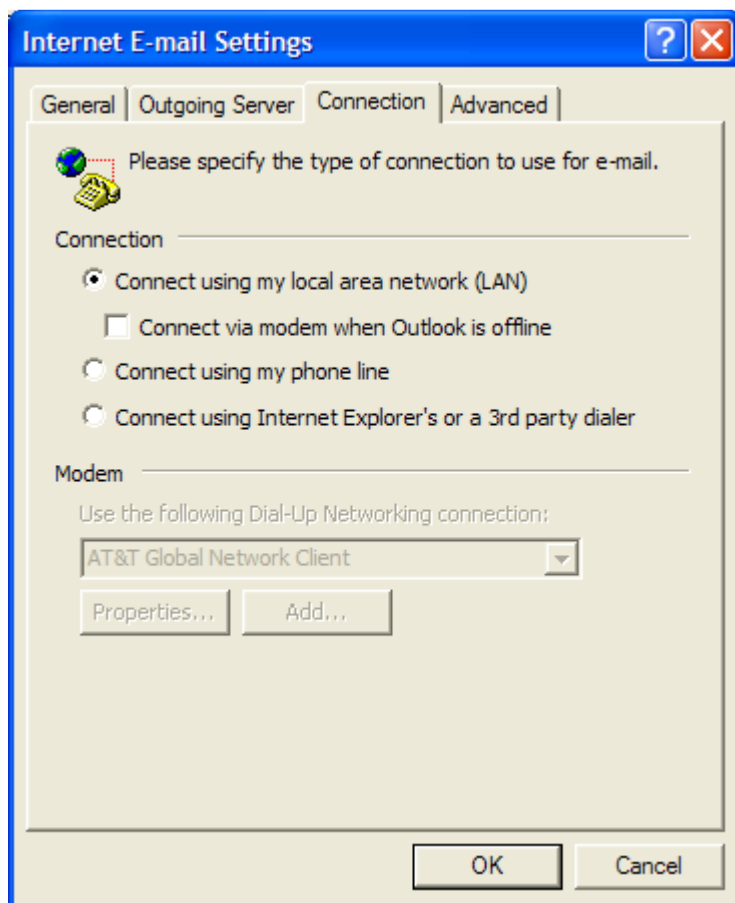
OK Cancel

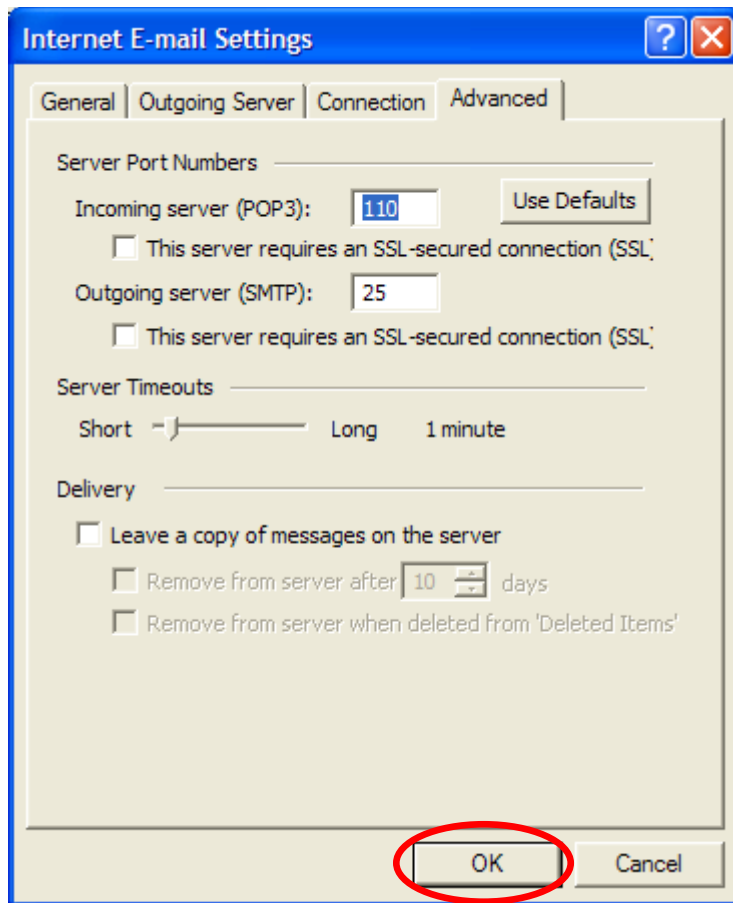
**Internet E-mail Settings** ✖

General **Outgoing Server** Connection Advanced

My outgoing server (SMTP) requires authentication

- Use same settings as my incoming mail server
- Log on using
  - User Name:
  - Password:
  - Remember password
  - Require Secure Password Authentication (SPA)
- Log on to incoming mail server before sending mail





Hit the OK button to advance to the next slide.

**E-mail Accounts**

**Internet E-mail Settings (POP3)**  
Each of these settings are required to get your e-mail account working.

**User Information**  
Your Name:   
E-mail Address:

**Server Information**  
Incoming mail server (POP3):   
Outgoing mail server (SMTP):

**Logon Information**  
User Name:   
Password:   
 Remember password

**Test Settings**  
After filling out the information on this screen, we recommend you test your account by clicking the button below. (Requires network connection)

Log on using Secure Password Authentication (SPA)

Hit the Test Account Settings button to advance to the next slide.

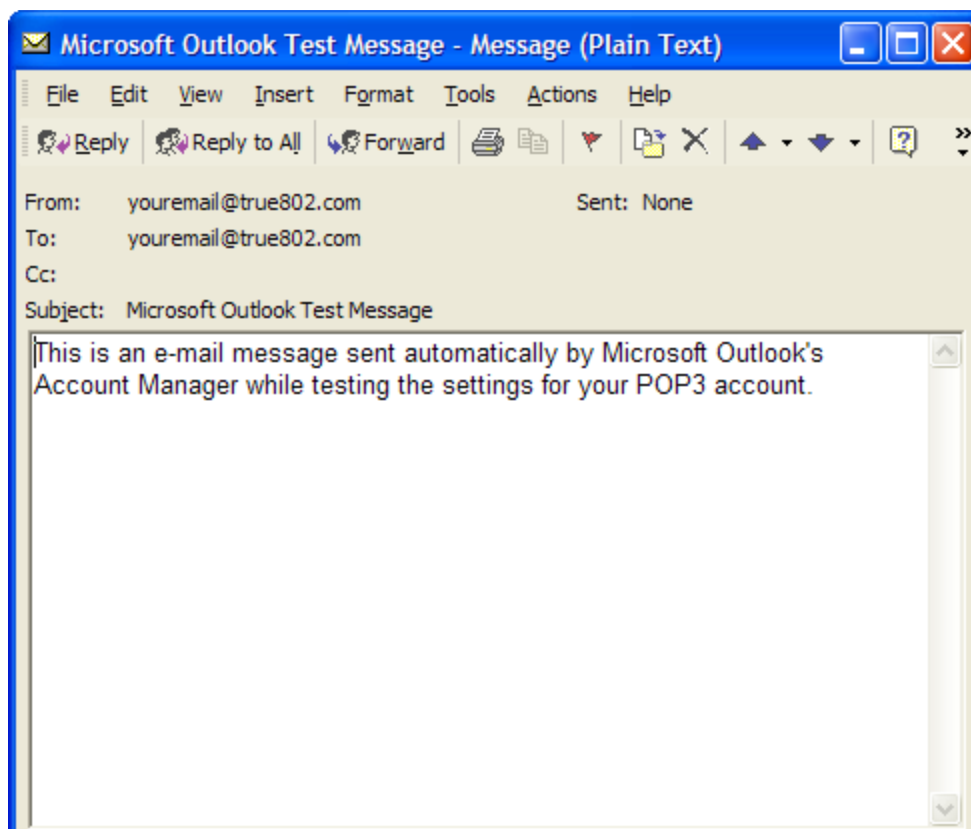
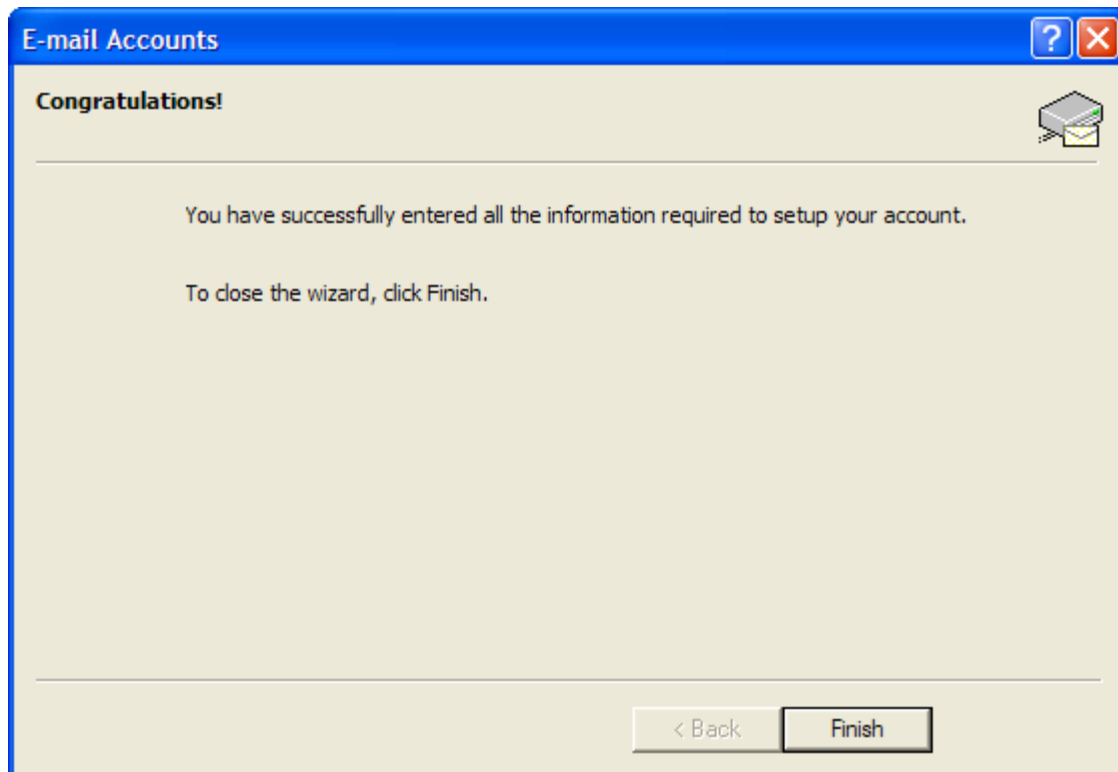
**Test Account Settings**

Congratulations! All tests completed successfully. Click Close to continue.

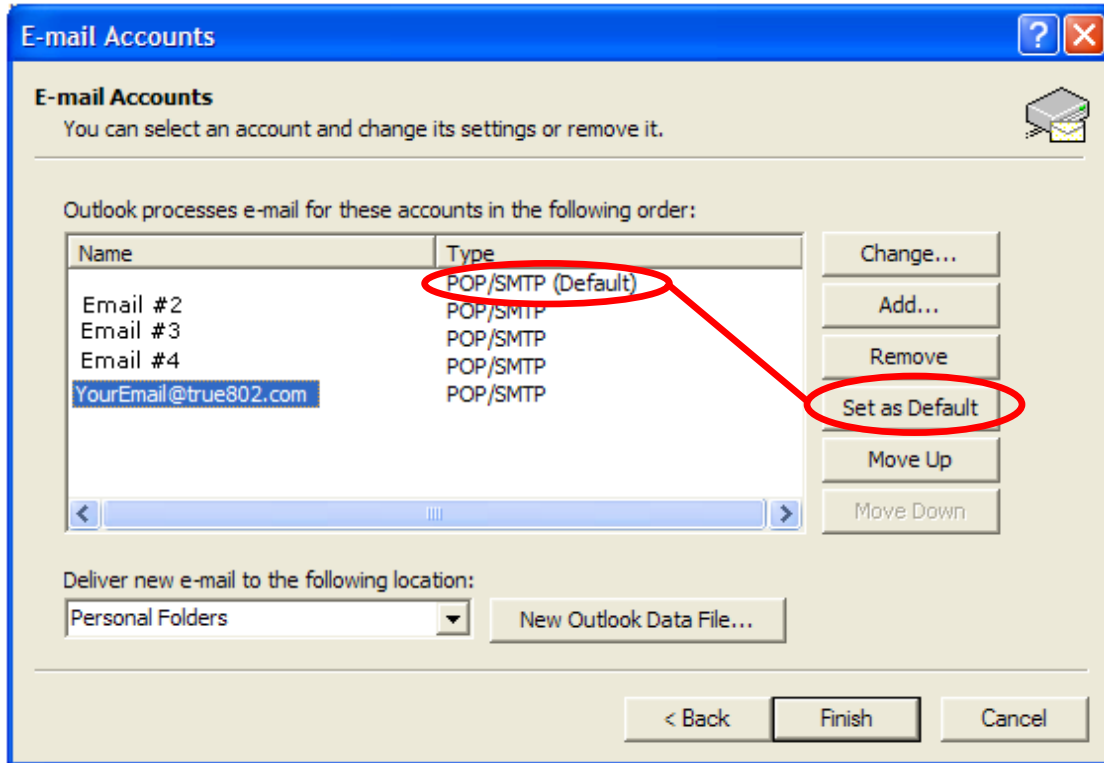
Tasks | Errors

Tasks	Status
✓ Establish network connection	Completed
✓ Find outgoing mail server (SMTP)	Completed
✓ Find incoming mail server (POP3)	Completed
✓ Log onto incoming mail server (POP3)	Completed
✓ Send test e-mail message	Completed

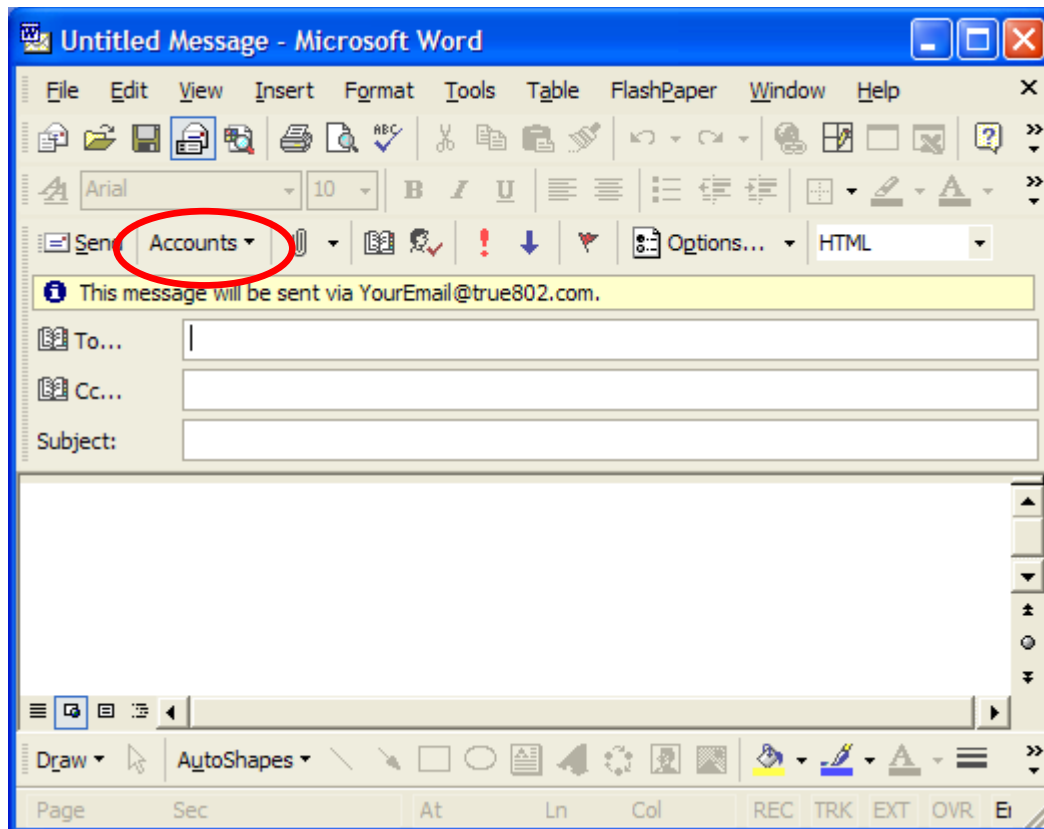
All test should be successful (Green Checks). If you get a red X, then double check that you entered everything correctly. Remember, your user name is always the full email address (e.g. youremail@true802.com).



Should receive a test message from your email address in your inbox.



Set the email that you utilize most as your default email address. This will be the email address that is automatically selected for any new emails that you send, unless you select otherwise in the Accounts drop down.



If you are using multiple email addresses in Outlook, then select the one you wish to be the Send From address by using the Accounts drop down list in the email composing window.